

BLUE SKY NETWORK



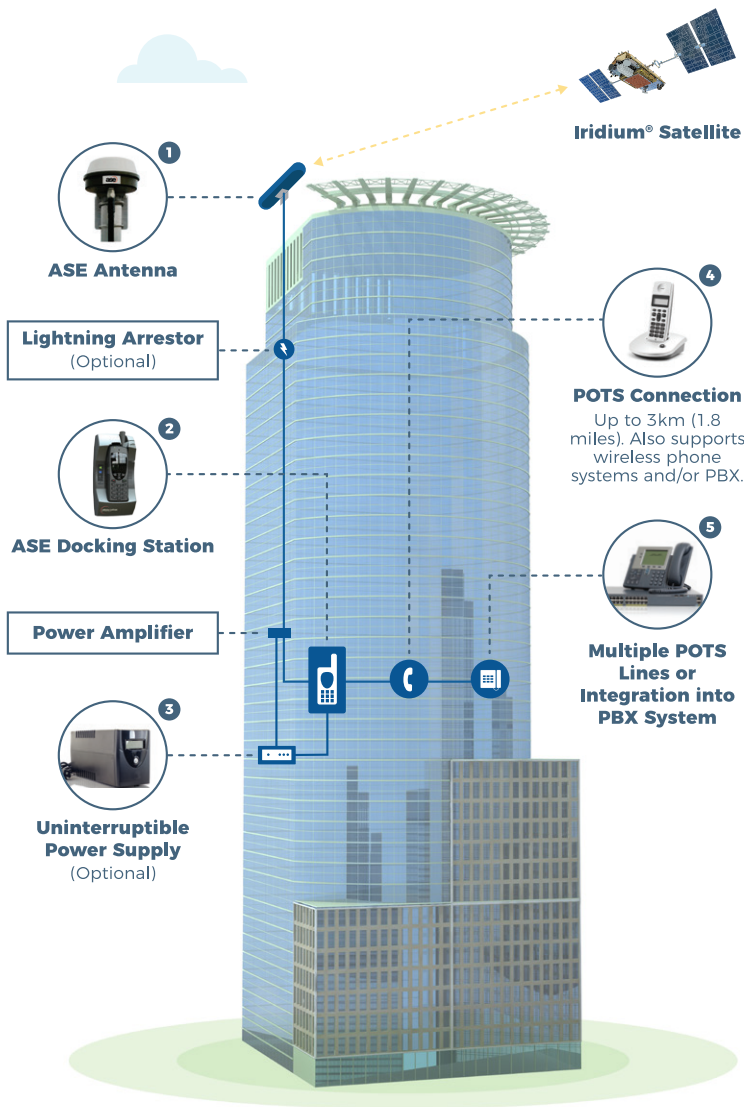
RESILIENCY SOLUTIONS

Voice solutions for disaster preparedness and business continuity

www.blueskynetwork.com

Blue Sky Network 

PREMIER EMERGENCY VOICE AND RESILIENCY SOLUTIONS



Blue Sky Network provides premier Iridium voice communication solutions for your emergency preparedness and business continuity plan.

From single-level structures to the world's tallest buildings, we eliminate the challenges of bringing satellite voice indoors with installations that perfectly match your needs.

RESOURCES

Click the button below to download resources, such as data sheets, instructions, quick start guides, and to create a tailored solution.

CLICK HERE



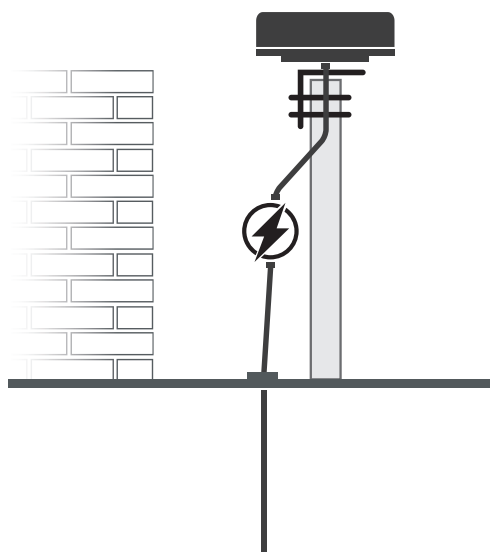
RESILIENCY SYSTEM COMPONENTS

Protect your Iridium satellite phone from severe weather with a fixed indoor installation or achieve grab-and-go mobility with a removable handset.

Our resiliency packages support all Iridium handsets.

ANTENNA AND CABLE SELECTION:

- › **ASE-PFA12** 12M (39 ft), LMR600, Premium Passive Filtered Antenna Lightning Arrester
- › **ASE-PFA20** 20M (66 ft), LMR600, Premium Passive Filtered Antenna Lightning Arrester
- › **ASE-PFA27** 27M (89 ft), LMR200, Premium Active Powered Filtered Antenna Lightning Arrester
- › **ASE-PFA40** 40M (131 ft), RG213, Premium Active Powered Filtered Antenna Lightning Arrester
- › **ASE-PFA70** 70M (230 ft), LMR400, Premium Active Powered Filtered Antenna Lightning Arrester
- › **ASE-PFA88** 88M (289 ft), LMR500, Premium Active Powered Filtered Antenna Lightning Arrester
- › **ASE-PFA105** 105M (344 ft), LMR600, Premium Active Powered Filtered Antenna Lightning Arrester
- › **ASE-FA12** 12M (39 ft), LMR400, Passive Antenna
- › **ASE-FA20** 20M (65 ft), LMR600, Passive Antenna

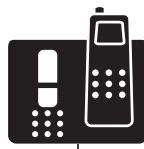


INDOOR SATELLITE PHONE

- ASE 9555-DK050/DK075
- ASE 9575
- ASE 9505A (MC03)
- ASE MC08 - FIXED STATION

10-32VDC, 18W
12V, 1.5A
UNIVERSAL
AC/DC Power Supply

Wireless Phone System



Analog Phone
ASE-PT01



Central Office Interface - PBX



or

or

POTS connection, up to 3000m (9842) length RJ11/Two wire
POTS connection in **ASE-DK075** only

INDOOR SATELLITE PHONE OPTIONS

IRIDIUM 9555 DOCKING STATION



ASE-DK075



ASE-DK075-H87

IRIDIUM 9555 DOCKING STATION OPTIONS:

- ASE-DK075** 9555 docking station with POTS for office infrastructure integration
- ASE-DK050** Docking station only

ADDITIONAL SYSTEM OPTIONS:

- ASE-DK050-H87/DK075-H87** Includes corded handset

9555 DOCKING STATION RESOURCES:

Click on the button to the right to access product resources and files such as the user guide, quick start guide, fact sheets, and more.

[CLICK HERE](#)



IRIDIUM 9575 DOCKING STATION



ASE-9575P-HQ-H87



ASE-9575P-HQ-P

IRIDIUM 9575 DOCKING STATION OPTIONS:

- ASE-9575P-HQ** 9575 docking station with POTS for office infrastructure integration

ADDITIONAL SYSTEM OPTIONS:

- ASE-9575P-HQ-H87** Includes corded handset
- ASE-9575P-HQ-P** Palm speaker/mic

9575 DOCKING STATION RESOURCES

Click on the button to the right to access product resources and files such as the user guide, quick start guide, brochure, images, and more.

[CLICK HERE](#)



INDOOR SATELLITE PHONE OPTIONS

FIXED SITE TERMINAL SOLUTIONS

Use a fixed site installation when you want to ensure all the components of your emergency system remain completely in place. A built-in transceiver provides readily available indoor satellite communication.



ASE-MC08

COMCENTER II INDOOR OPTIONS:

ASE-MC08

Fixed station Iridium voice terminal with POTS for office infrastructure integration

- › Includes ADU (MC08G), 50' (15 meter) cable (12050T), breakout plastic wall plate (12000T), and mounting bracket (MNT20).



ASE-MC08-H87

ASE-MC08-H87

Fixed station Iridium voice terminal with POTS for office infrastructure integration and privacy handset

- › Includes ADU (MC08G), privacy handset (ASE-MNT07), 50' (15 meter) cable (12050T), breakout plastic wall plate (12000T), and mounting bracket (MNT20).

MC08 RESOURCES:

Click on the button to the right to access product resources and files such as the user guide, quick start guide, brochures, images, and more.

CLICK HERE



ANTENNA AND CABLE OPTIONS

CABLE LENGTHS AND ANTENNA OPTIONS



ACTIVE POWERED

- › **ASE-PFA12** 12M (39 ft), LMR600, Premium Passive Filtered Antenna Lightning Arrester
- › **ASE-PFA20** 20M (66 ft), LMR600, Premium Passive Filtered Antenna Lightning Arrester
- › **ASE-PFA27** 27M (89 ft), LMR200, Premium Active Powered Filtered Antenna Lightning Arrester



PREMIUM FILTERED

- › **ASE-PFA40** 40M (131 ft), RG213, Premium Active Powered Filtered Antenna Lightning Arrester
- › **ASE-PFA70** 70M (230 ft), LMR400, Premium Active Powered Filtered Antenna Lightning Arrester
- › **ASE-PFA88** 88M (289 ft), LMR500, Premium Active Powered Filtered Antenna Lightning Arrester



PASSIVE

- › **ASE-PFA105** 105M (344 ft), LMR600, Premium Active Powered Filtered Antenna Lightning Arrester
- › **ASE-FA12** 12M (39 ft), LMR400, Passive Antenna
- › **ASE-FA20** 20M (65 ft), LMR600, Passive Antenna

ANTENNA AND CABLE RESOURCES:

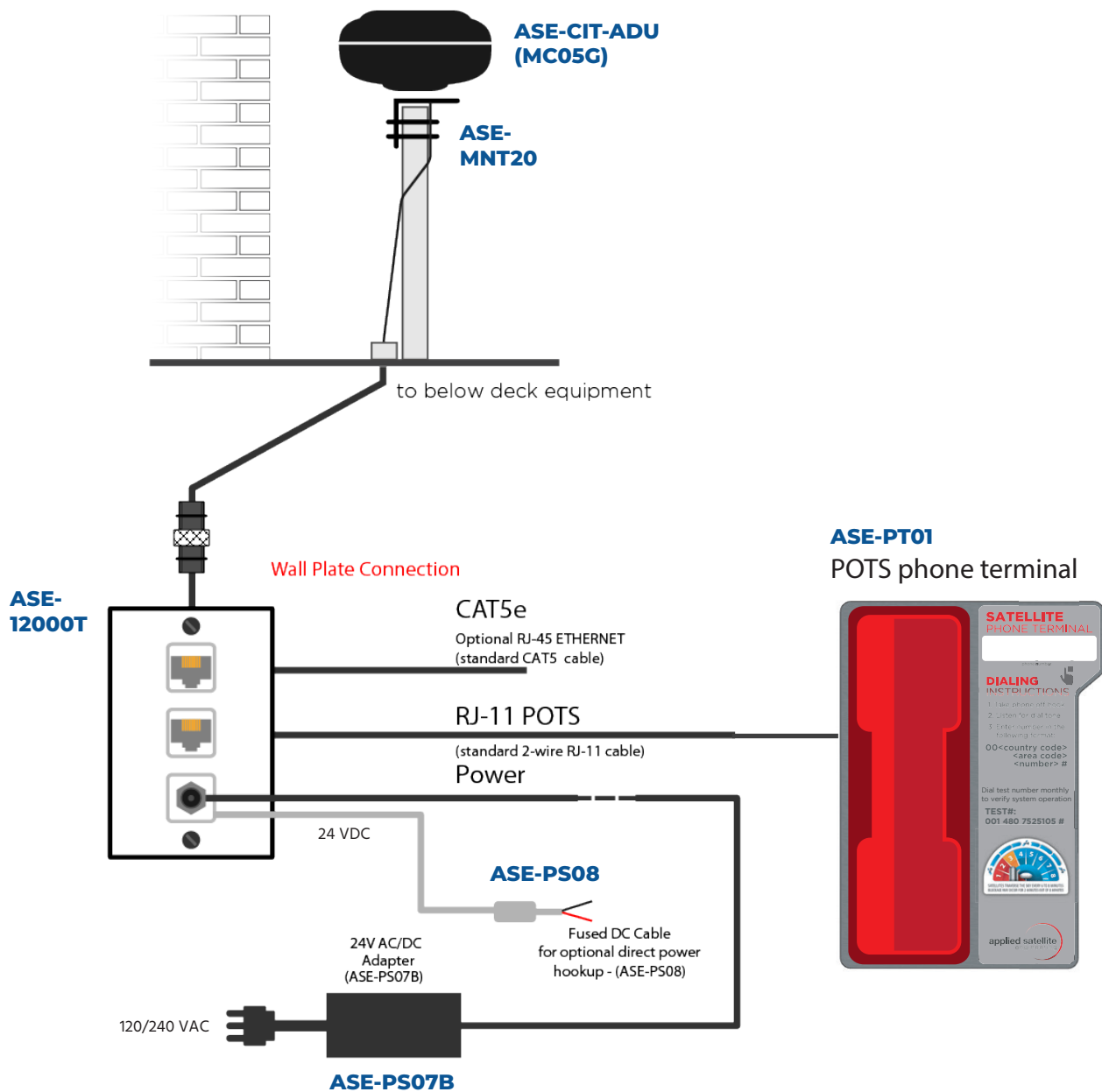
Click on the button to the right to access product resources and files such as installation manuals, brochures, fact sheets, and more.

[CLICK HERE](#)



COMCENTER II OUTDOOR SYSTEM COMPONENTS

ASE-MC05 FIXED SITE TERMINAL SOLUTION



ALL-IN-ONE RESILIENCY SYSTEM OPTIONS

COMCENTER II OUTDOOR FIXED STATION TERMINAL



ASE-MC05

COMCENTER II OUTDOOR OPTIONS:

ASE-MC05

Fixed station Iridium voice terminal with POTS for office infrastructure integration

- › Includes ADU (MC05), 50' (15 meter) cable (12050T), breakout plastic wall plate (12000T), and mounting bracket (MNT20).

CABLE EXTENDER OPTIONS:

ASE-12050T	50' (15 meters)
ASE-12100T	100' (30 meters)
ASE-12150T	150' (60 meters)
ASE-12328T	328' (100 meters)

COMCENTER II OUTDOOR RESOURCES:

Click on the button to the right to access product resources and files such as installation manuals, user guides, data sheets, and more.

[CLICK HERE](#)



RESILIENCY PACKAGE COMPONENTS

SPECIFICATIONS AND SHIPPING INFORMATION

ASE-9575P-HQ-P	Standard/Push to Talk Docking Station with POTS and GPS: Includes dock, office mount, palm speaker/mic	
	Harmonized Code - HTS#: 8518.30.2000 ECCN: EAR99	
	Shipping Dimensions: 16 x 14 x 8 in., 6 lbs. (41 cm x 36 cm x 20 cm, 3 kg)	
ASE-9575P-HQ-H87	Standard/Push to Talk Docking Station with POTS and GPS: Includes dock, office mount, DPL intelligent handset	
	Harmonized Code - HTS#: 8518.30.2000 ECCN: EAR99	
	Shipping Dimensions: 16 x 14 x 8 in., 6 lbs. (41 cm x 36 cm x 20 cm, 3 kg)	
ASE-9575P-HQ	Standard/Push to Talk Docking Station with POTS and GPS: Includes dock, office mount	
	Harmonized Code - HTS#: 8518.30.2000 ECCN: EAR99	
	Shipping Dimensions: 16 x 14 x 8 in., 6 lbs. (41 cm x 36 cm x 20 cm, 3 kg)	
ASE-DK050	9555 Docking Station: Includes DK050 docking station	
	Harmonized Code - HTS#: 8518.30.2000 ECCN: EAR99	
	Shipping Dimensions: 16 x 14 x 8 in., 6 lbs. (41 cm x 36 cm x 20 cm, 3 kg)	
ASE-DK050-H87	9555 Docking Station: Includes DK050 docking station, DPL intelligent handset	
	Harmonized Code - HTS#: 8518.30.2000 ECCN: EAR99	
	Shipping Dimensions: 16 x 14 x 8 in., 6 lbs. (41 cm x 36 cm x 20 cm, 3 kg)	
ASE-DK075	9555 Docking Station: Includes DK075 with POTS docking station	
	Harmonized Code - HTS#: 8518.30.2000 ECCN: EAR99	
	Shipping Dimensions: 16 x 14 x 8 in., 6 lbs. (41 cm x 36 cm x 20 cm, 3 kg)	
ASE-DK075-H87	9555 Docking Station: Includes DK075 with POTS docking station, DPL intelligent handset	
	Harmonized Code - HTS#: 8518.30.2000 ECCN: EAR99	
	Shipping Dimensions: 16 x 14 x 8 in., 6 lbs. (41 cm x 36 cm x 20 cm, 3 kg)	

RESILIENCY PACKAGE COMPONENTS

SPECIFICATIONS AND SHIPPING INFORMATION

ASE-MC08	ComCenter II Indoor: Fixed station iridium voice terminal	
	Harmonized Code - HTS#: 8517.62.0050 ECCN: 5A992.a Shipping Dimensions: 16 x 14 x 8 in., 6 lbs. (41 cm x 36 cm x 20 cm, 3 kg)	
ASE-MC08-H87	ComCenter II Indoor: Fixed station iridium voice terminal	
	Harmonized Code - HTS#: 8517.62.0050 ECCN: 5A992.a Shipping Dimensions: 16 x 14 x 8 in., 6 lbs. (41 cm x 36 cm x 20 cm, 3 kg)	
ASE-PT01	POTS Station: Includes POTS phone, mount plate, and instruction placard	
	Harmonized Code - HTS#: 8518.30.2000 ECCN: EAR99 Shipping Dimensions: 16 x 14 x 8 in., 5 lbs. (41 cm x 36 cm x 20 cm, 2 kg)	
ASE-PFA12	Premium Filtered Passive Antenna kit: 39' (12 meters) LMR600 cable, premium passive filtered antenna, lightning arrester, and mounting bracket	
	Harmonized Code - HTS#: 8517.70.0000 ECCN: EAR99 Shipping Dimensions: 16 x 14 x 8 in., 6 lbs. (41 cm x 36 cm x 20 cm, 3 kg)	
ASE-PFA20	Premium Filtered Passive Antenna kit: 66' (20 meters) LMR600 cable, premium passive filtered antenna, lightning arrester, and mounting bracket	
	Harmonized Code - HTS#: 8517.70.0000 ECCN: EAR99 Shipping Dimensions: 16 x 14 x 8 in., 12 lbs. (41 cm x 36 cm x 20 cm, 5 kg)	
ASE-PFA27	Premium Filtered Active Antenna kit: 89' (27 meters) LMR200 cable, premium active filtered antenna, lightning arrester, interface box, and mounting bracket	
	Harmonized Code - HTS#: 8517.70.0000 ECCN: EAR99 Shipping Dimensions: 16 x 14 x 8 in., 18 lbs. (41 cm x 36 cm x 20 cm, 8 kg)	
ASE-PFA40	Premium Filtered Active Antenna kit: 131' (40 meters) RG213 cable, premium active filtered antenna, lightning arrester, interface box, and mounting bracket	
	Harmonized Code - HTS#: 8517.70.0000 ECCN: EAR99 Shipping Dimensions: 20 x 16 x 14 in., 24 lbs. (41 cm x 36 cm x 20 cm, 11 kg)	







RESILIENCY PACKAGE COMPONENTS

SPECIFICATIONS AND SHIPPING INFORMATION

ASE-PFA70	Premium Filtered Active Antenna kit: 230' (70 meters) LMR400 cable, premium active filtered antenna, lightning arrester, interface box, and mounting bracket	
	Harmonized Code - HTS#: 8517.70.0000 ECCN: EAR99	
	Shipping Dimensions: 20 x 16 x 14 in., 32 lbs. (41 cm x 36 cm x 20 cm, 15 kg)	
ASE-PFA88	Premium Filtered Active Antenna kit: 289' (88 meters) LMR500 cable, premium active filtered antenna, lightning arrester, interface box, and mounting bracket	
	Harmonized Code - HTS#: 8517.70.0000 ECCN: EAR99	
	Shipping Dimensions: 20 x 16 x 14 in., 38 lbs. (41 cm x 36 cm x 20 cm, 17 kg)	
ASE-PFA105	Premium Filtered Active Antenna kit: 344' (105 meters) LMR600 cable, premium active filtered antenna, lightning arrester, interface box, and mounting bracket	
	Harmonized Code - HTS#: 8517.70.0000 ECCN: EAR99	
	Shipping Dimensions: 20 x 16 x 14 in., 42 lbs. (41 cm x 36 cm x 20 cm, 19 kg)	
ASE-FA12	Passive Antenna kit: 40 ft (12 m) LMR400 cable, passive antenna, and mount	
	Harmonized Code - HTS#: 8517.70.0000 ECCN: EAR99	
	Shipping Dimensions: 16 x 14 x 8 in., 6 lbs. (41 cm x 36 cm x 20 cm, 3 kg)	
ASE-FA20	Passive Antenna kit: 66 ft (20 m) LMR600 cable, passive antenna, and mount	
	Harmonized Code - HTS#: 8517.70.0000 ECCN: EAR99	
	Shipping Dimensions: 16 x 14 x 8 in., 12 lbs. (41 cm x 36 cm x 20 cm, 5 kg)	
ASE-DA12	DA12: 40 ft (12 m) 2 x LMR400 cable, Dual (Irid/GPS) antenna	
	Harmonized Code - HTS#: 8517.70.0000 ECCN: EAR99	
	Shipping Dimensions: 16 x 14 x 8 in., 12 lbs. (41 cm x 36 cm x 20 cm, 5 kg)	
ASE-DA20	DA20: 66 ft (20 m) 2 x LMR600 cable, Dual (Irid/GPS) antenna	
	Harmonized Code - HTS#: 8517.70.0000 ECCN: EAR99	
	Shipping Dimensions: 20 x 16 x 14 in., 20 lbs. (51 cm x 41 cm x 36 cm, 9 kg)	

RESILIENCY PACKAGE COMPONENTS

SPECIFICATIONS AND SHIPPING INFORMATION

ASE-DA40	<p>DA40: 131 ft (40 m) 2 x RG214 cable, active antenna, and GPS antenna</p> <p>Harmonized Code - HTS#: 8517.70.0000 ECCN: EAR99</p> <p>Shipping Dimensions: 20 x 16 x 14 in., 20 lbs. (51 cm x 41 cm x 36 cm, 14 kg)</p>	
ASE-DA70	<p>DA70: 230 ft (70 m) 2 x LMR400 cable, active antenna, and GPS antenna</p> <p>Harmonized Code - HTS#: 8517.70.0000 ECCN: EAR99</p> <p>Shipping Dimensions: 22 x 18 x 16 in., 52 lbs. (56 cm x 46 cm x 41 cm, 24 kg)</p>	
ASE-LA01 / LA02	<p>ASE-LA01: Lightning arrester for premium antenna kits (PFA) ASE-LA02: Lightning arrester for antenna kits (ASE-FA12 and ASE-FA20)</p> <p>Harmonized Code - HTS#: 8517.70.0000 ECCN: EAR99</p> <p>Shipping Dimensions: 8 x 8 x 8 in., 2 lbs. (20 cm x 20 cm x 20 cm, 1 kg)</p>	
ASE-MNT01	<p>Handset and Mounting kit: For 9555 Docking station family</p> <p>Harmonized Code - HTS#: 8518.30.2000 ECCN: EAR99</p> <p>Shipping Dimensions: 8 x 8 x 8 in., 2 lbs. (20 cm x 20 cm x 20 cm, 1 kg)</p>	
ASE-MNT03	<p>Handset and Mounting kit: For 9575 Docking station family</p> <p>Harmonized Code - HTS#: 8504.40.8500 ECCN: EAR99</p> <p>Shipping Dimensions: 8 x 8 x 8 in., 2 lbs. (20 cm x 20 cm x 20 cm, 1 kg)</p>	
ASE-MNT04	<p>Handset and Mounting kit: For 9505A Docking station family</p> <p>Harmonized Code - HTS#: 8518.30.2000 ECCN: EAR99</p> <p>Shipping Dimensions: 8 x 8 x 8 in., 2 lbs. (20 cm x 20 cm x 20 cm, 1 kg)</p>	
ASE-MNT07	<p>Handset and Mounting kit: For ComCenter II family</p> <p>Harmonized Code - HTS#: 8518.30.2000 ECCN: EAR99</p> <p>Shipping Dimensions: 8 x 8 x 3 in., 2 lbs. (20 cm x 20 cm x 8 cm, 1 kg)</p>	

RESILIENCY PACKAGE COMPONENTS

SPECIFICATIONS AND SHIPPING INFORMATION

ASE-PS01	ASE-PS01: AC/DC converter for 9505A docking station family	
	Harmonized Code - HTS#: 8504.40.8500 ECCN: EAR99 Shipping Dimensions: 9 x 9 x 3 in., 2 lbs. (23 cm x 23 cm x 8 cm, 1 kg)	
ASE-PS02	ASE-PS02: DC converter with cigarette lighter adapter	
	Harmonized Code - HTS#: 8504.40.8500 ECCN: EAR99 Shipping Dimensions: 9 x 9 x 3 in., 2 lbs. (23 cm x 23 cm x 8 cm, 1 kg)	
ASE-PS05	ASE-PS05: AC/DC converter for 9555 and 9575 docking station families, and ComCenter II Indoor station	
	Harmonized Code - HTS#: 8504.40.8500 ECCN: EAR99 Shipping Dimensions: 9 x 9 x 3 in., 2 lbs. (23 cm x 23 cm x 8 cm, 1 kg)	
ASE-PS06	ASE-PS06: DC power cable with cigarette lighter adapter	
	Harmonized Code - HTS#: 8504.40.8500 ECCN: EAR99 Shipping Dimensions: 9 x 9 x 3 in., 2 lbs. (23 cm x 23 cm x 8 cm, 1 kg)	
ASE-PS07	ASE-PS07: AC/DC converter for ComCenter II Outdoor	
	Harmonized Code - HTS#: 8504.40.8500 ECCN: EAR99 Shipping Dimensions: 9 x 9 x 3 in., 2 lbs. (23 cm x 23 cm x 8 cm, 1 kg)	
ASE-PS071-2	ASE-PS071-2: AC/DC converter for AA511-2 active antenna	
	Harmonized Code - HTS#: 8504.40.8500 ECCN: EAR99 Shipping Dimensions: 9 x 9 x 3 in., 2 lbs. (23 cm x 23 cm x 8 cm, 1 kg)	
ASE-MC05	ComCenter II Outdoor: Fixed station iridium voice terminal (MC05) with built in antenna for exposed installation.	
	Harmonized Code - HTS#: 8517.62.0050 ECCN: 5A992.a Shipping Dimensions: 16 x 13 x 13 in., 10 lbs. (41 cm x 33 cm x 33 cm, 5 kg)	

RESILIENCY PACKAGE COMPONENTS

SPECIFICATIONS AND SHIPPING INFORMATION

ASE-12000T	<p>RJ11 and RJ45 cable adapter for the ComCenter Outdoor - cable adapter for the ComCenter Outdoor - RJ11/RJ45/Power and plastic wall plate</p> <p>Harmonized Code - HTS#: 8544.20.0000 ECCN: EAR99</p> <p>Shipping Dimensions: 8 x 8 x 3 in., 2 lbs. (20 cm x 20 cm x 8 cm, 1 kg)</p>	
ASE-12050T	<p>50' (15m) Cable for ComCenter II Outdoor - turret connection 1" (3cm) diameter</p> <p>Harmonized Code - HTS#: 8544.20.0000 ECCN: EAR99</p> <p>Shipping Dimensions: 20 x 16 x 8 in., 3 lbs. (51 cm x 41 cm x 20 cm, 2 kg)</p>	
ASE-12100T	<p>100' (30m) Cable for ComCenter II Outdoor - turret connection 1" (3cm) diameter</p> <p>Harmonized Code - HTS#: 8544.20.0000 ECCN: EAR99</p> <p>Shipping Dimensions: 20 x 16 x 8 in., 6 lbs. (51 cm x 41 cm x 20 cm, 3 kg)</p>	
ASE-12150T	<p>150' (46m) Cable for ComCenter II Outdoor - turret connection 1" (3cm) diameter</p> <p>Harmonized Code - HTS#: 8544.20.0000 ECCN: EAR99</p> <p>Shipping Dimensions: 20 x 16 x 8 in., 9 lbs. (51 cm x 41 cm x 20 cm, 4 kg)</p>	
ASE-12328T	<p>328' (100m) Cable for ComCenter II Outdoor - turret connection 1" (3cm) diameter</p> <p>Harmonized Code - HTS#: 8544.20.0000 ECCN: EAR99</p> <p>Shipping Dimensions: 20 x 16 x 8 in., 16 lbs. (51 cm x 41 cm x 20 cm, 7 kg)</p>	
ASE-GSK01-CIT	<p>Gasket Kit for ComCenter Outdoor II - annual maintenance gasket kit</p> <p>Harmonized Code - HTS#: 8544.20.0000 ECCN: EAR99</p> <p>Shipping Dimensions: 12 x 8 x 3 in., 2 lbs. (30 cm x 20 cm x 8 cm, 1 kg)</p>	
ASE-MNT20	<p>Mounting System for ComCenter Outdoor: Vibration mount bracket with horizontal or vertical mounting options</p> <p>Harmonized Code - HTS#: 8544.20.0000 ECCN: EAR99</p> <p>Shipping Dimensions: 8 x 8 x 8 in., 2 lbs. (20 cm x 20 cm x 20 cm, 1 kg)</p>	